



MONTHLY MEMBERSHIP PROGRESS REPORT

District 23 A

Results as of: 02/28/2018

GMT: MAHESH CHITNIS

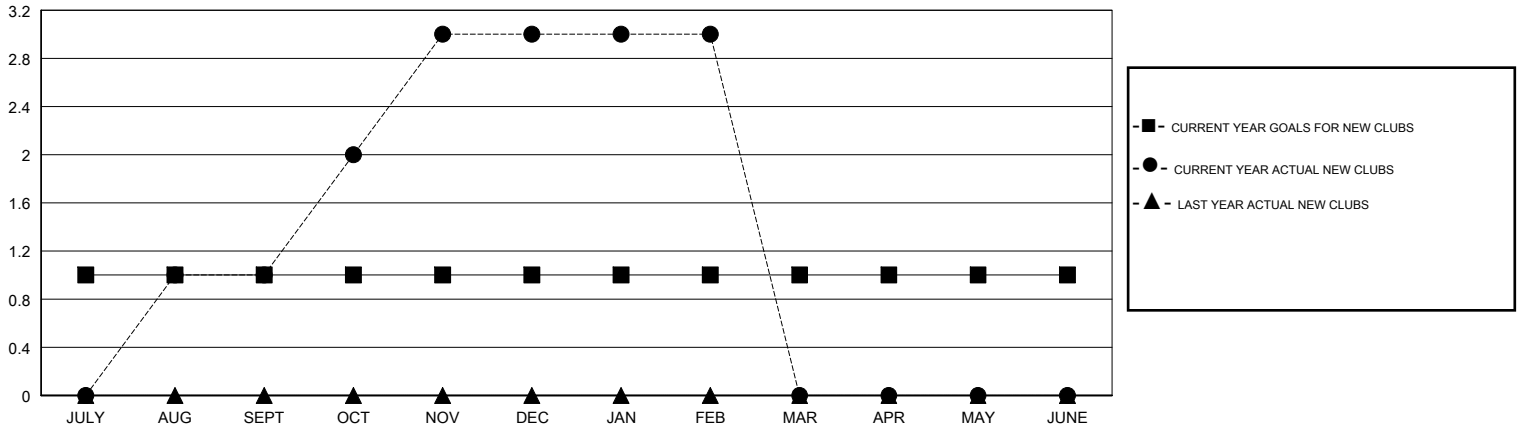
LOCATION CONNECTICUT

GMT CA

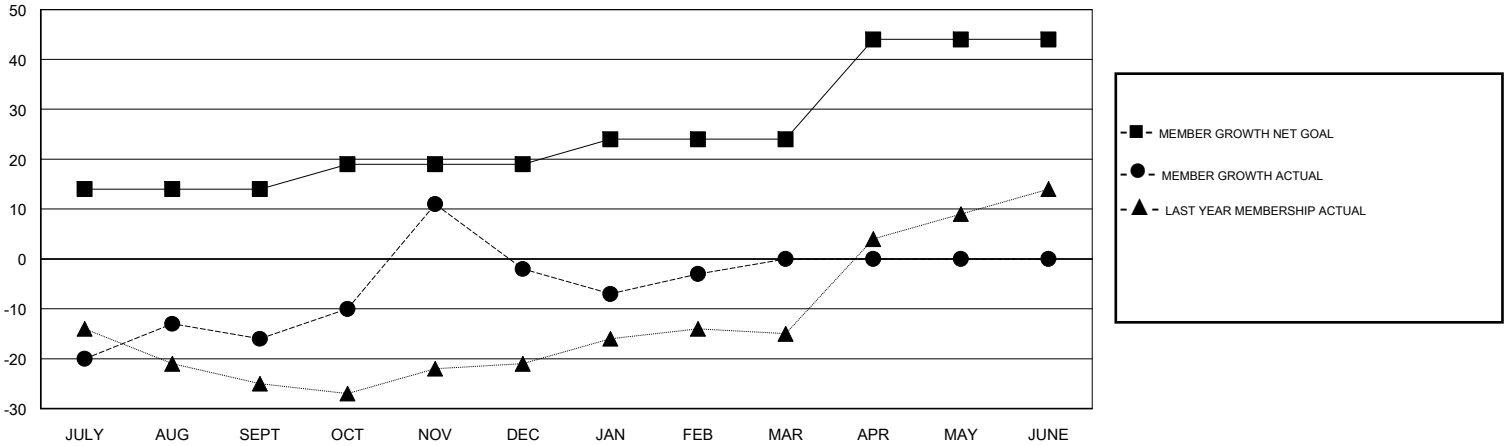
| Clubs | | | |
|-----------------------|---------------|-----------|---------------|
| RESULTS FOR 2017-2018 | | | |
| QUARTER | NEW CLUB GOAL | NEW CLUBS | DROPPED CLUBS |
| JULY/AUG/SEPT | 1 | 1 | 0 |
| OCT/NOV/DEC | 0 | 2 | 0 |
| JAN/FEB/MAR | 0 | 0 | 1 |
| APR/MAY/JUNE | 0 | 0 | 0 |

| Members | | | |
|-----------------------|------------------------|----------------------|--|
| RESULTS FOR 2017-2018 | | | |
| QUARTER | MEMBER GROWTH NET GOAL | MEMBER GROWTH ACTUAL | DROPPED MEMBERS ACTUAL (including transfers) |
| JULY/AUG/SEPT | 14 | 48 | 63 |
| OCT/NOV/DEC | 5 | 54 | 37 |
| JAN/FEB/MAR | 5 | 19 | 20 |
| APR/MAY/JUNE | 20 | 0 | 0 |

GOALS AND ACTUAL NEW CLUBS CUMULATIVE



GOALS AND ACTUAL MEMBERS CUMULATIVE



| |
|------------------|
| DROPPED CLUBS: 1 |
|------------------|

24 CLUBS OF 51 ADDED 1 OR MORE NEW MEMBERS

| GENDER DISTRIBUTION | |
|--|--------------|
| MALE | 979 (68.80%) |
| FEMALE | 444 (31.20%) |
| Women Percentage Fiscal Year Goal: 33% | |

| DROPPED MEMBERS | |
|-----------------|------------|
| DECEASED | 21 |
| CLUB CANCELLED | 0 |
| OTHER | 99 |
| TOTAL | 120 |

[CLICK HERE FOR CUMULATIVE MEMBERSHIP DATA](#)

| | |
|---------------------------------|-----|
| TOTAL FAMILY UNIT MEMBERS | 166 |
| FAMILY MEMBERS PAYING HALF DUES | 84 |